



CALIFORNIA COLLABORATIVE  
FOR EDUCATIONAL EXCELLENCE

## State and Federal Program Directors

*Presentation*

---

February 16, 2018

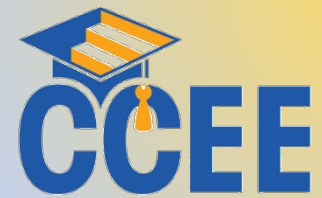
# Overview

- » Board approved Revised 2017-18 Plan in August 2017
  - Component I: Modules
  - Component II: Library
  - Component III: Networks
- » DOF approved Revised 2017-18 Plan on August 31, 2017

# Component I: Modules

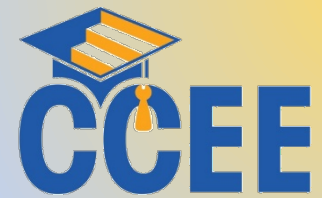
## » Dashboard/LCAP Updates

- Topical Leads: Sutter & Madera
- Working in partnership with CDE on content
- January 10, 2018: In-person/online training
  - 410 attendees (358 virtual and 52 in-person)
  - Resources archived: <http://www.ccee-ca.org/training-dashboard-lcap.asp>
- Spring 2018: In-person trainings co-facilitated by community based organizations for families



# Component I: Modules

- » Demonstration of Increased or Improved Services for Unduplicated Students
  - Topical Leads: San Diego COE & San Mateo COE
  - Live online training held on November 9, 2017
  - February-March 2018: Smaller, more in-depth in-person trainings for groups of LEA LCAP teams
    - Co-hosts: KIPP LA, Modoc/Lassen, San Luis Obispo, Stanislaus, CCSA, CSDC, Yolo, San Diego, San Mateo, CISC, Ed-Trust West, Public Advocates



# Component I: Modules

## » Differentiated Assistance

- Topical Lead: El Dorado COE
- Two short training videos (February release):
  - Differentiated Assistance Basics
  - Understanding Eligibility Criteria
- Podcasts (March release):
  - Interviews with staff from COEs and eligible districts regarding differentiated assistance approach and experience

# Component I: Modules

## » Data & Evaluation

- Topical Lead: Humboldt COE
- February 8, 2018: Online training on “Dashboard Literacy”
  - Use example LEA data to “deep dive” into the Dashboard
- March 1, 2018: Online training on the Dashboard that addresses the specific needs of small LEAs

# Component II: Library

## » Library: *Trainers' Collection*

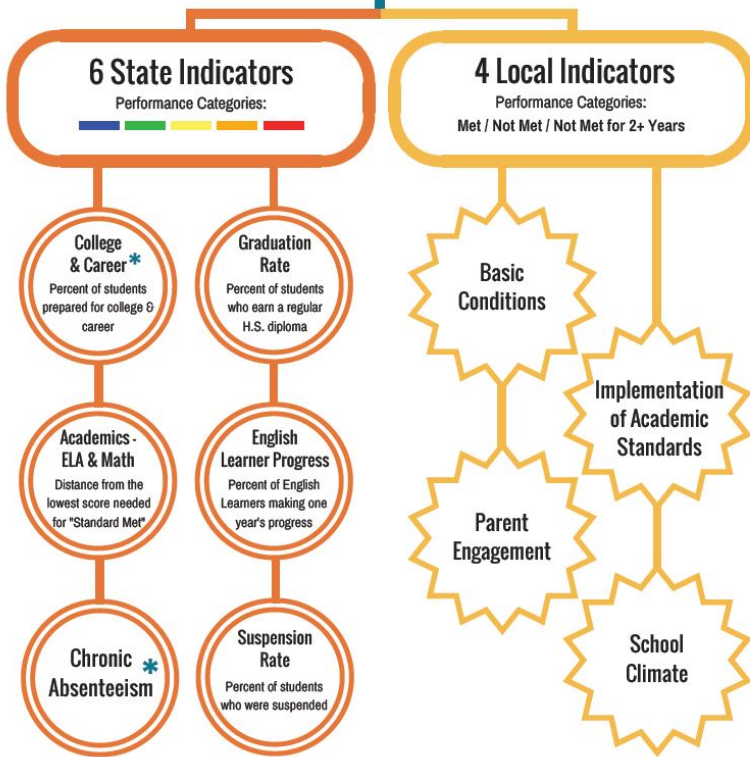
- 116 registered users (as of January 22, 2018)
- Recent orientations held or scheduled:
  - Merced (3x); Fresno; CISC
- Review teams completed reviewing first batch of submissions
- Second round of submissions will be reviewed by review teams in February

# Most Viewed File



## CALIFORNIA SCHOOL DASHBOARD

### 10 Indicators to Measure Performance



\* Data Not Available

February 6, 2017

## 3 Levels of Support

Under the LCFF statutes, LEA eligibility for differentiated assistance and intensive intervention is based on student group performance in each LCFF priority area as measured by state & local indicators.

### Level 1: All

State and local agencies provide an array of support resources, tools, and voluntary technical assistance that **all** LEAs may use to improve student performance and narrow disparities among student groups across the LCFF priorities. The primary goal of the first level of support is to provide all LEAs and schools with early support so that they don't require more intensive assistance at the second and third levels of support, based on low performance.



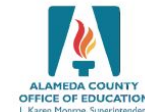
### Level 2: Differentiated

County superintendents and the California Collaborative for Educational Excellence (CCEE) provide **differentiated** assistance for LEAs and schools, in the form of individually designed technical assistance, to address identified performance issues.



### Level 3: Intensive

The Superintendent of Public Instruction may require more **intensive** interventions for LEAs and/or schools with persistent performance issues and a lack of improvement over a specified time period.



February 6, 2017



# Component II: Library

## » Library: *Public Collection*

- Exploring possibility with WestEd
- Unrestricted collection of resources
- Subset of *Trainers' Collection* resources appropriate for all audiences
- Non-editable files only (e.g., PDF, audio, video)

# Component III: Networks

- » Measuring Impact of PLNs:
  - Monthly reflections
  - Individual PLN Impact Plans
  - Tri-annual survey
  - Observations of PLN meetings
- » Continues to be broad interest in PLNs
- » Change in PLX Coach

# Outreach

- » 2017-18 County Office of Education Visits
  - So far (as of January 22, 2018): 28
  - Currently scheduled (through June 30, 2018): 7
- » Statewide Association conferences
- » Monthly State & Federal Program meetings
- » Monthly BASC meetings
- » Bimonthly CISC meetings

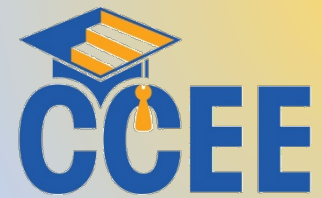
# Outreach

- » November 2017: Opportunity Institute brought together advocacy groups and other organizations
  - To gather stakeholder input to inform CCEE's future approach to support
  - Key takeaways: urgency, demonstrating progress, engaging stakeholders
- » December 2017: Retreat with advocacy organizations

# Customized Trainings

» 2017-18 Customized Trainings: 19 (as of January 22, 2018)

- 9 Associations
- 3 University/College
- 3 Districts
- 3 Charter schools
- 1 Other



# Thank you!

» Contact information

- lishwara (lish) Ryaru
- [iryaru@ccee-ca.org](mailto:iryaru@ccee-ca.org)